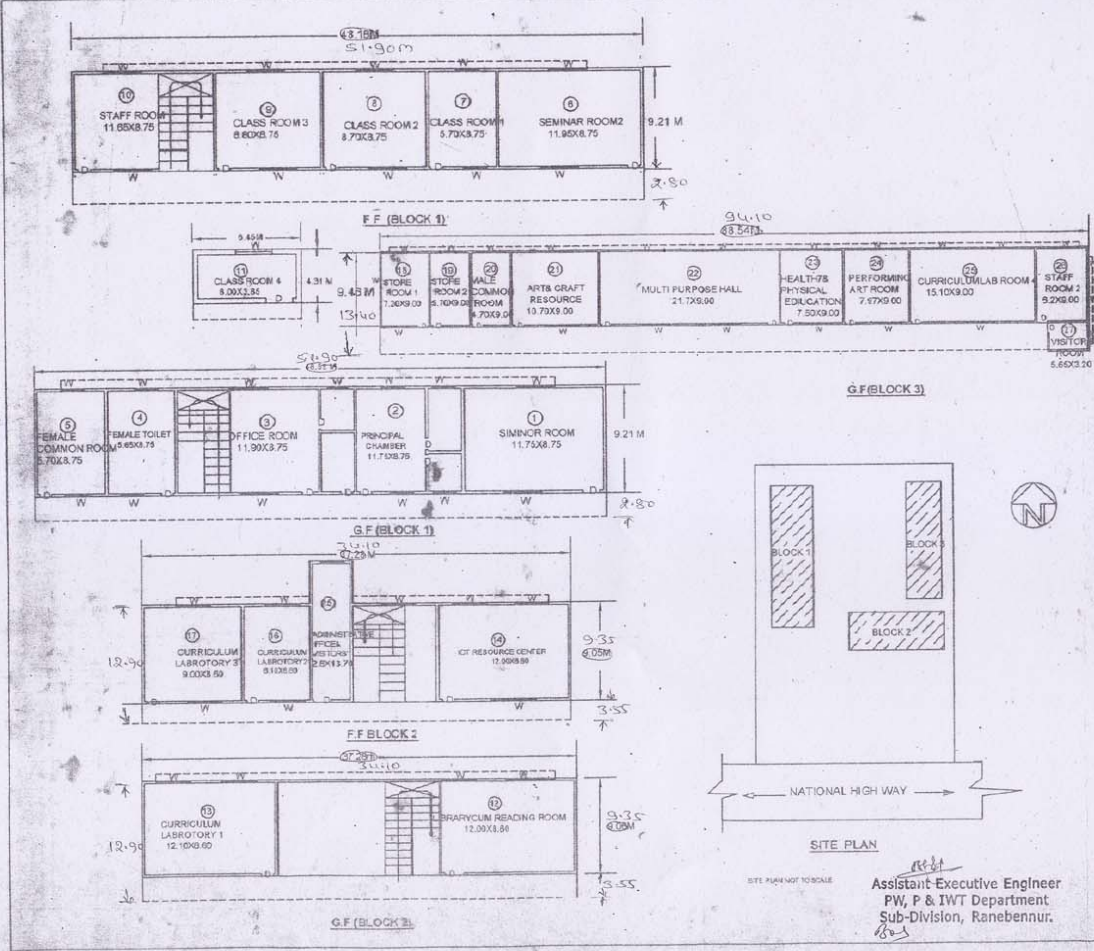


TITLE
 EXISTING BUILDING PLAN OF RITES COLLEGE
 OF EDUCATION IN THE LAID OF
 R.S.NO.841&8521 & A-EAST SIDE P.B.ROAD
 RANEBENNUR, DHARWARI

DIMENSIONS ARE IN METERS

STABILITY CERTIFICATE:
 CERTIFY THIS HAS BEEN DESIGNED AS PER
 CODE OF PRACTICE TO TAKE THE LOAD OF
 GROUND FLOOR. HENCE THE BUILDING IS
 SAFE & STRONG.

DRAWN AT: IDEAL CONSTRUCTION.
 Consulting Engineers & Contractors
 Shantinath Building Ashok Nagar,
 RANEBENNUR-581115



INDEX	SIZE	AREA
F.F. BLOCK 1		
1. SEMINAR ROOM 1	11.70x8.75	102.81
2. PRINCIPAL CHAMBER	11.70x8.75	102.81
3. OFFICE ROOM	11.90x4.75	56.43
4. FEMALE TOILET	5.85x3.75	21.86
5. FEMALE COMMON ROOM	5.70x3.75	21.34
F.F. BLOCK 2		
6. SEMINAR ROOM 2	11.90x4.75	56.43
7. CLASS ROOM 1	8.70x3.75	32.63
8. CLASS ROOM 2	8.70x3.75	32.63
9. CLASS ROOM 3	8.80x3.75	33.00
10. STAFF ROOM 1	11.85x3.75	44.44
11. CLASS ROOM 4	6.00x3.85	23.10
G.F. BLOCK 1		
12. LIBRARY CU W READING ROOM	12.08x3.89	47.00
13. CURRICULUM LABORATORY 1	12.18x3.89	47.29
F.F. BLOCK 2		
14. ICT RESOURCE CENTER	12.00x3.89	46.68
15. ADMINISTRATIVE OFFICE	2.80x1.70	4.76
16. CURRICULUM LABORATORY 2	8.10x3.89	31.30
17. CURRICULUM LABORATORY 3	8.00x3.89	31.12
G.F. BLOCK 3		
18. STORE ROOM 1	7.20x3.89	27.95
19. STORE ROOM 2	5.70x3.89	21.97
20. MALE COMMON ROOM	4.70x3.89	18.28
21. ART & CRAFT RESOURCE CENTER	13.70x3.89	53.29
22. MULTI PURPOSE HALL	21.70x3.89	84.40
23. HEALTH & PHYSICAL EDUCATION	7.50x3.89	29.00
24. PERFORMING ART ROOM	7.97x3.89	30.90
25. CURRICULUM LABORATORY 4	11.10x3.89	43.00
26. STAFF ROOM 2	6.20x3.89	24.12
27. VISITOR ROOM	5.85x3.20	18.72
		2173.27 SQM
		23,993 SFT

Assistant Executive Engineer
 PW, P & IWT Department
 Sub-Division, Ranebennur.